

Creation | Execution | Performance | Development | Expression | Experience

mine

2024

Growth | Design Profile

EMBRACE CHANGES

CREATE OPPORTUNITIES

# Who We Are 01

- 01 About Us
- 02 Strategy
- 03 Broad Geographic

# What We Do 02

- 05 Activities
  - Growth
  - Design

# How We Do 03

- 07 Clients
- 09 Teams

# Growth 04

- 11 GROWTH
  - Business Creation
- MINE 2019
- ICS Platform 2021
- 15 Maanz 2021
- 19 Abra 2022
- Himo 2022
- 23 Wiink 2023
  - Business Execution
- Khuzestan Stone 2021
- 27 Baft Shahr 2023
  - Business Performance
- 29 Taqaron 2022
  - Business Development
- 33 Basilico 2020
- Khuzestan Stone 2021
- Zagross 2022
- Diako 2022

# Design 05

- 35 DESIGN
  - Experience | Physical
- Telecommunication Exhibition 2014
- Iran University of Science and Technology 2015
- Zarivar Cafe Baar 2016
- Science and Technology Park 2016
- Cibo 2016
- Farahani Residential Apartment 2016
- 39 House No.01 2017
- Indigenous Canadian House 2017
- Standard Laboratory 2017
- Zaferanie Mall 2017
- Mana Collection 2017
- Northern Garden Park 2017
- Yahyae House 2018
- Plasco 2018
- Family House 2018
- Providential House 2019
- 43 Arak Innovation Factory 2019
- Karun Collection 2019
- Basilico 2020
- 47 Kumush Collection 2020
- Damavand Collection 2020
- Era Collection 2021
  - Experience | Digital
- MINE 2019
- ICS Platform 2021
- Pragmatica 2022
- Taqaron 2022
- 51 Expression | Identity
- Badii Leather 2017
- MINE 2019
- 55 Bnon 2019
- ICS Platform 2021

- 57 Khuzestan Stone 2021
- 61 Boutique Apartment 2021
- 65 Maanz 2021
- 69 Kaaj 2022
- 71 Zagross 2022
- Taqaron 2022
- Wiink 2023
  - Expression | Interaction
- ICS Platform 2021
- Taqaron 2022

# Contacts 06

- 75 Website
- Email
- Call
- Address
- ID
- Channels

**MINE, where design  
and growth come together to  
drive your business forward.**

**Our team of experts;**

specializes in providing comprehensive and innovative **solutions** to help your business thrive.

From architecture design and brand identity to channels design, From business ideation and modeling to business development support, we have the tools and expertise to take your business to the **next level**.

**We believe that;**

embracing changes and creating opportunities is the key to reach new **heights**.

Let us help you unlock your full potential and bring your vision to **life** together.

Our firm helps bridge the gap between the **present** and the **possible**, what is and what can be.

ABOUT US

STRATEGY

**%10** CANADA  
EXPERIENCE

**%5** USA  
EXPRESSION

**%15** EUROPE  
EXPERIENCE  
BUSINESS CREATION  
BUSINESS EXECUTION

BROAD  
GEOGRAPHIC

EXPERIENCE | EXPRESSION  
BUSINESS CREATION  
BUSINESS EXECUTION  
BUSINESS PERFORMANCE  
BUSINESS DEVELOPMENT

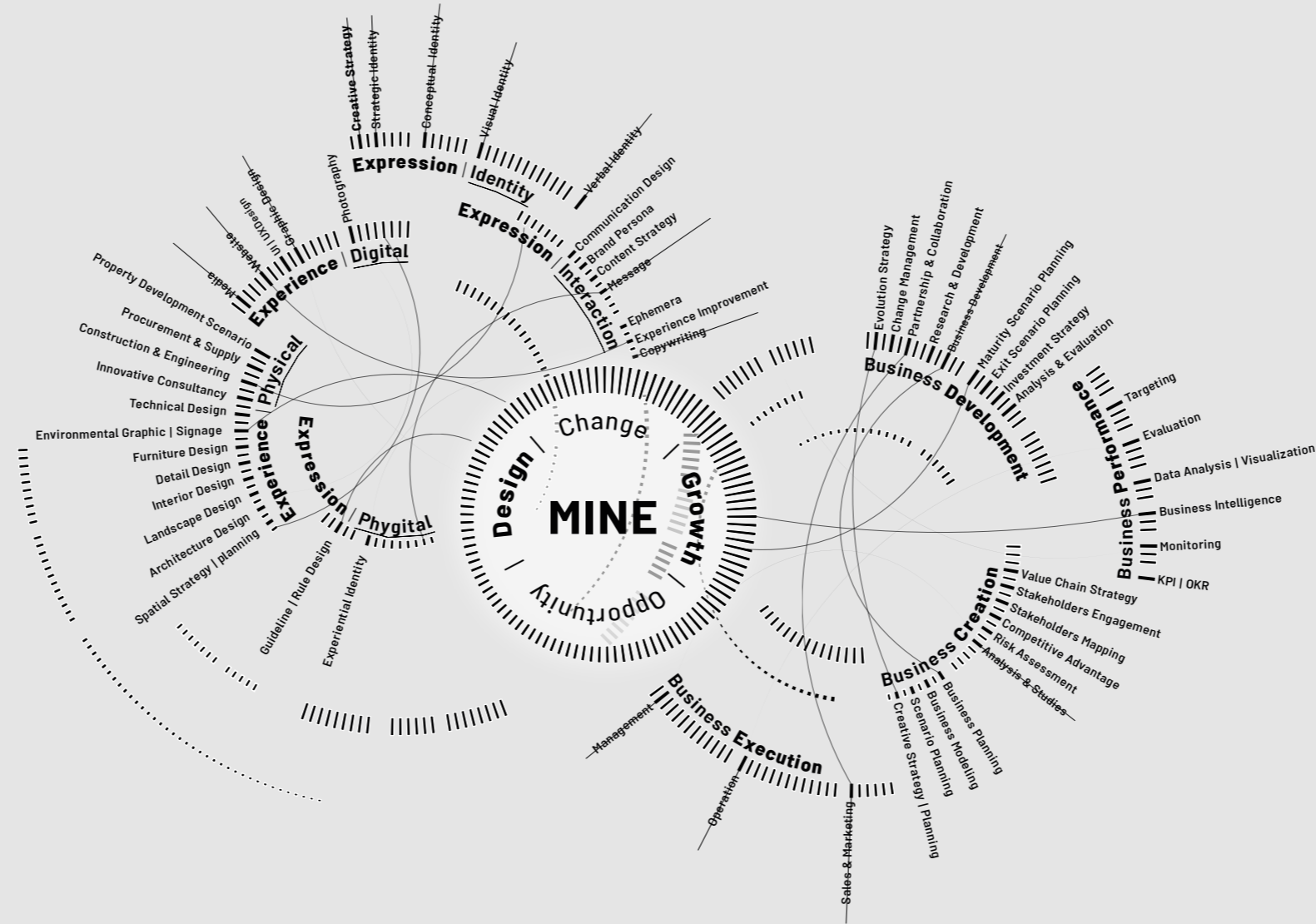
IRAN **%70**



We believe **Design** should be effective, and unforgettable.

Let us help you create a thrilling **experience** and precise **expression** that connects you with your audience.

- Architecture Design
- Environmental Graphic
- Innovative Consultancy
- Website Design
- Graphic Design
- Visual Identity
- Creative Strategy

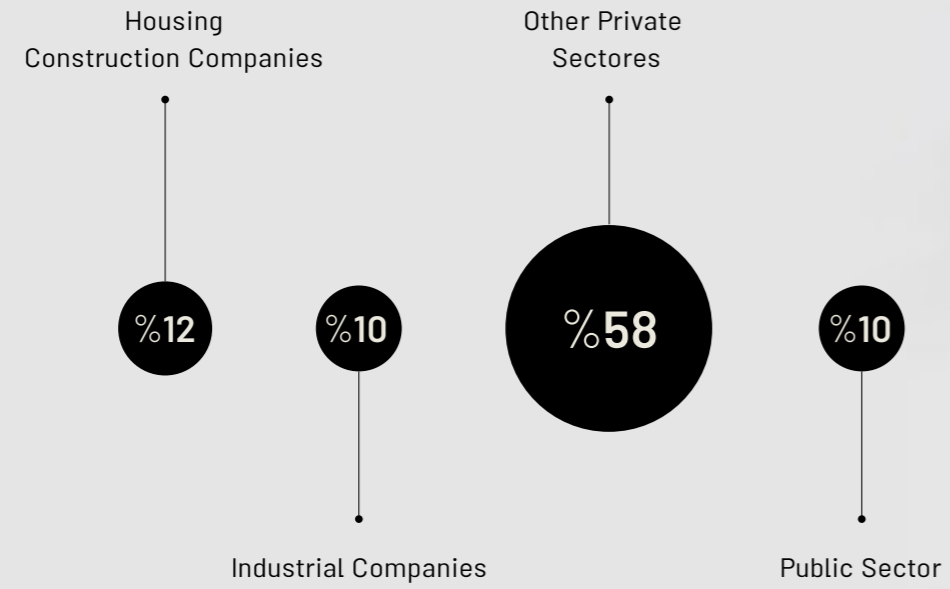


**Growth** can be a journey, but it doesn't have to be a daunting one.

We're here to help you navigate the path to success with customized **strategies** and expert guidance every step of the way.

- Business Modeling
- Risk Assessment
- Value Chain Strategy
- Management
- Operation
- Business Intelligence
- Investment Strategy

# ACTIVITIES



# CLIENTS

MINE's business model is based on being close to our clients and experts. We are ready to create value for the clients and partners in design and growth.

We are a team of inspired and diverse individuals, driven by inclusion and guided by **purpose**.

Our passion for purposeful, sustainable work fuels our commitment to shaping our **communities** and the **future**.

We pride ourselves on our collaborative **approach**, thriving on challenges and unconventional thinking.

Our team is made up of a network of experts who channel our curiosity into creating innovative solutions to complex issues.

Pro-Team Member

**MohamadMahdi SabetFard | Yeganeh Yektaeian**

**SY** Saghar Yazdani  
Coordinator | Designer

**HA** Hannan Abagheri  
Designer | Analyst

**ME** Mohamad Ebrahimi  
Director | Advisor

**FM** Farshad Moradabadi  
Developer | Web designer

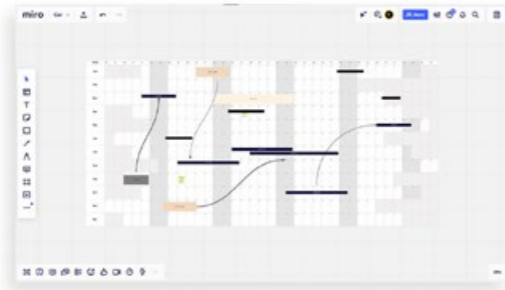
TEAMS





# GROWTH





# GROWTH

## Business **Creation**

We collaborate closely with entrepreneurs to ideate and model businesses that are uniquely tailored to their vision, helping them to bring their ideas to realities.

- Business Modeling
- Business Planning
- Risk Assessment
- Stakeholders Mapping
- Value Chain Strategy

## Business **Execution**

We provide end-to-end business plans and support for better execution, allowing businesses to efficiently and effectively execute their strategies, ultimately helping them achieve their goals.

- Management
- Operation
- Sales
- Marketing
- Planning

## Business **Performance**

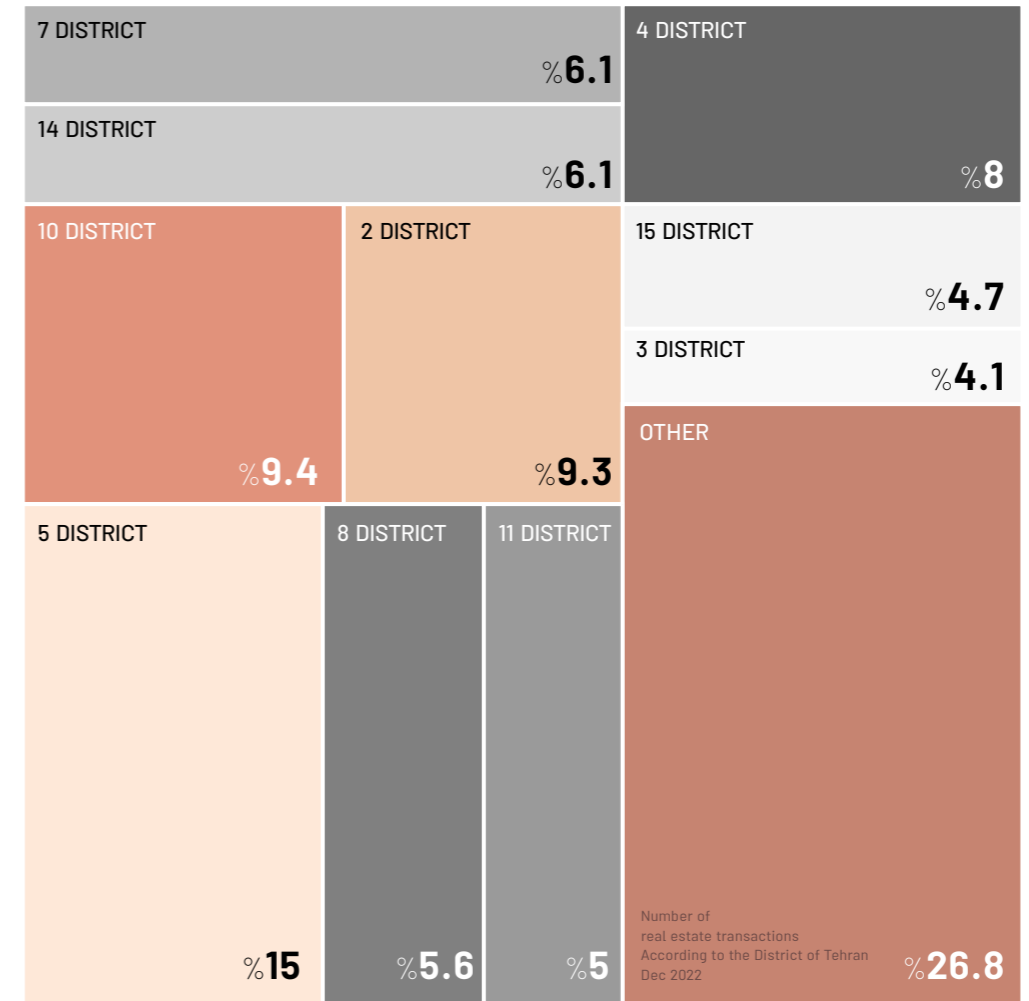
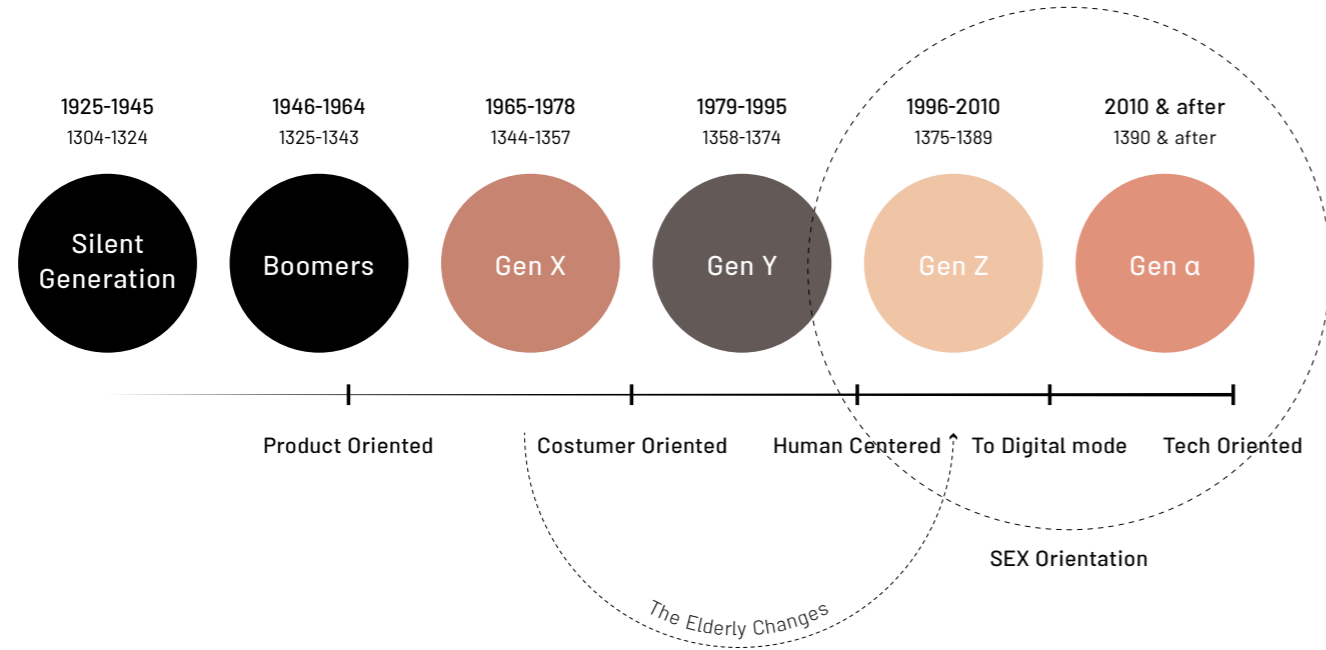
We measure and analyze data to identify areas for improvement, helping businesses to increase their performance, and maximize their profits.

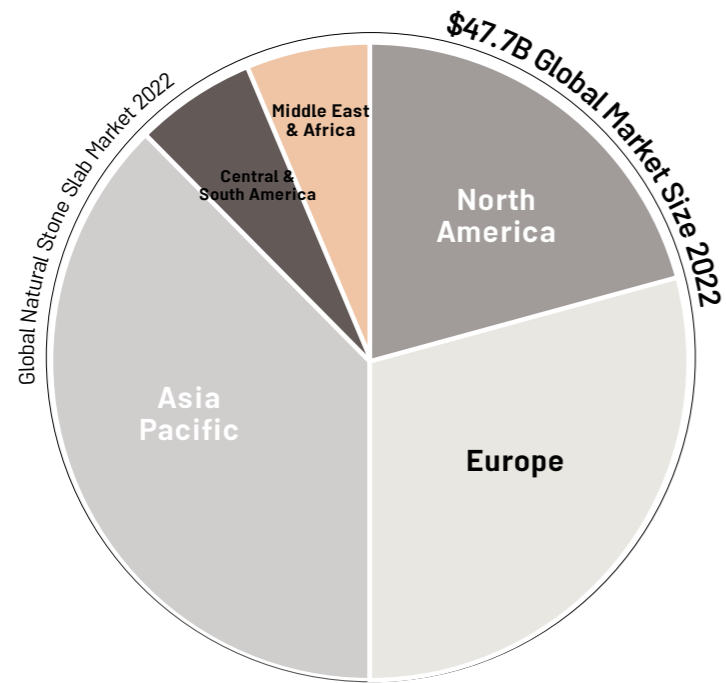
- Data Analysis
- Business Intelligence
- Targeting
- Monitoring
- KPI | OKR

## Business **Development**

We facilitate the growth and development of businesses' products or services by providing comprehensive strategic solutions, that covers the entire process from inception to exit strategy.

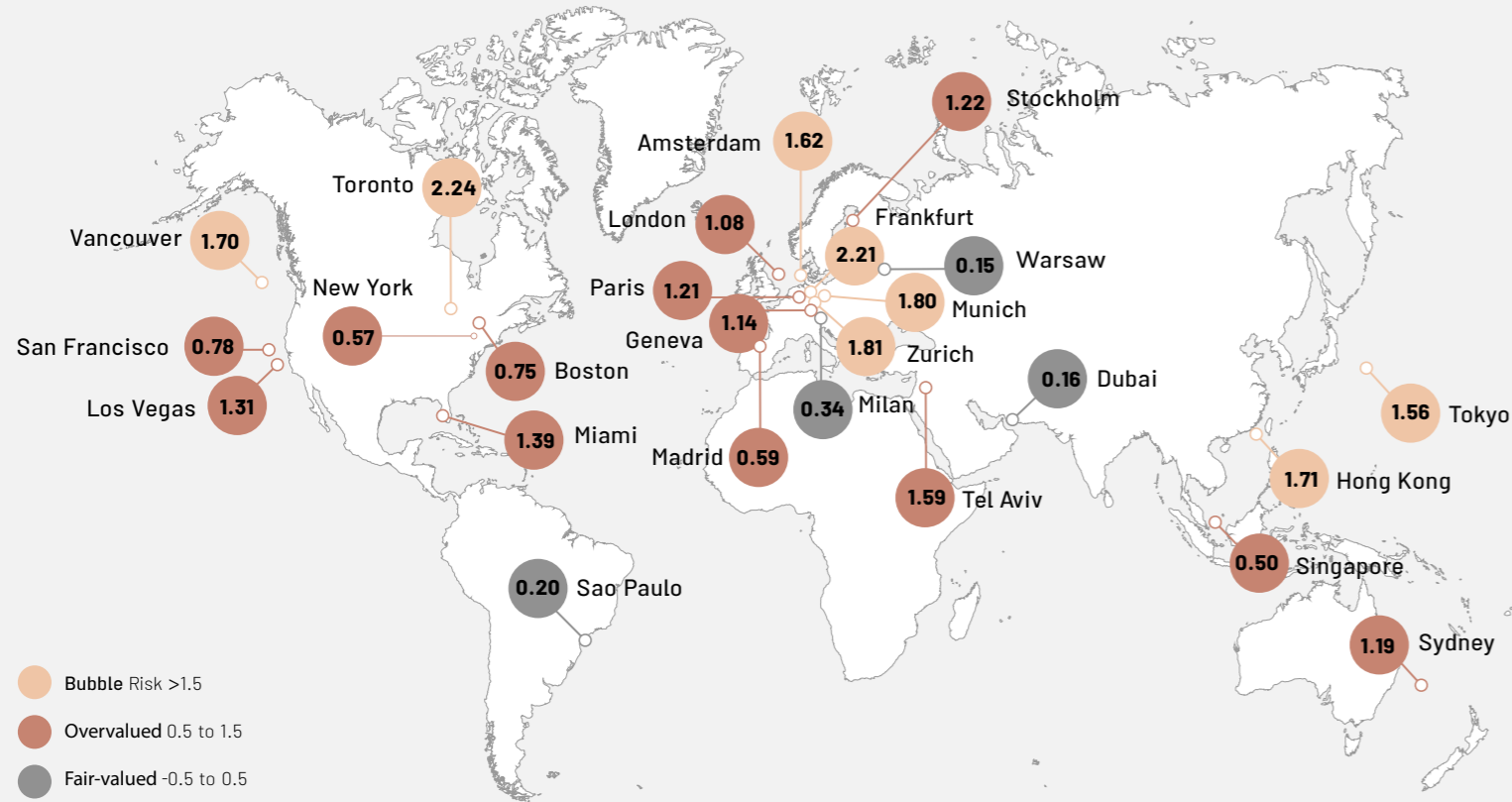
- Change Management
- Business Development
- Investment Strategy
- Exit Scenario Planning
- Analysis & Evaluation





How should I design and implement a creative **marketing** and **sales** plan?

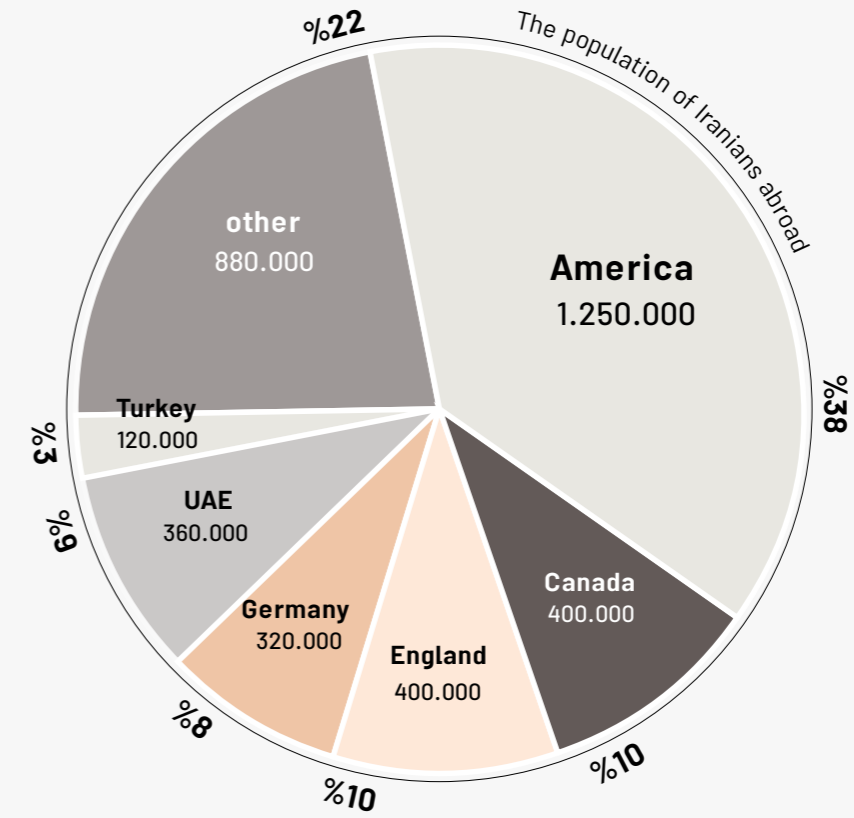
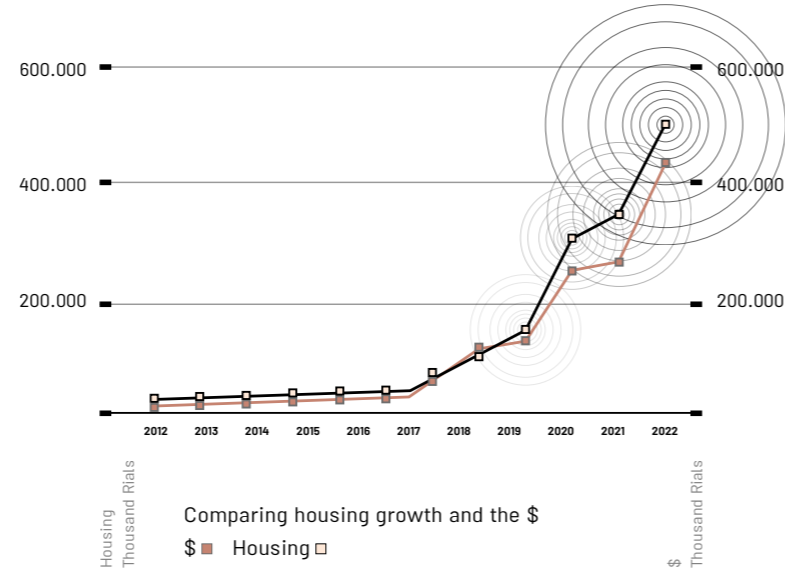




How to create a **scenario** for starting a business?

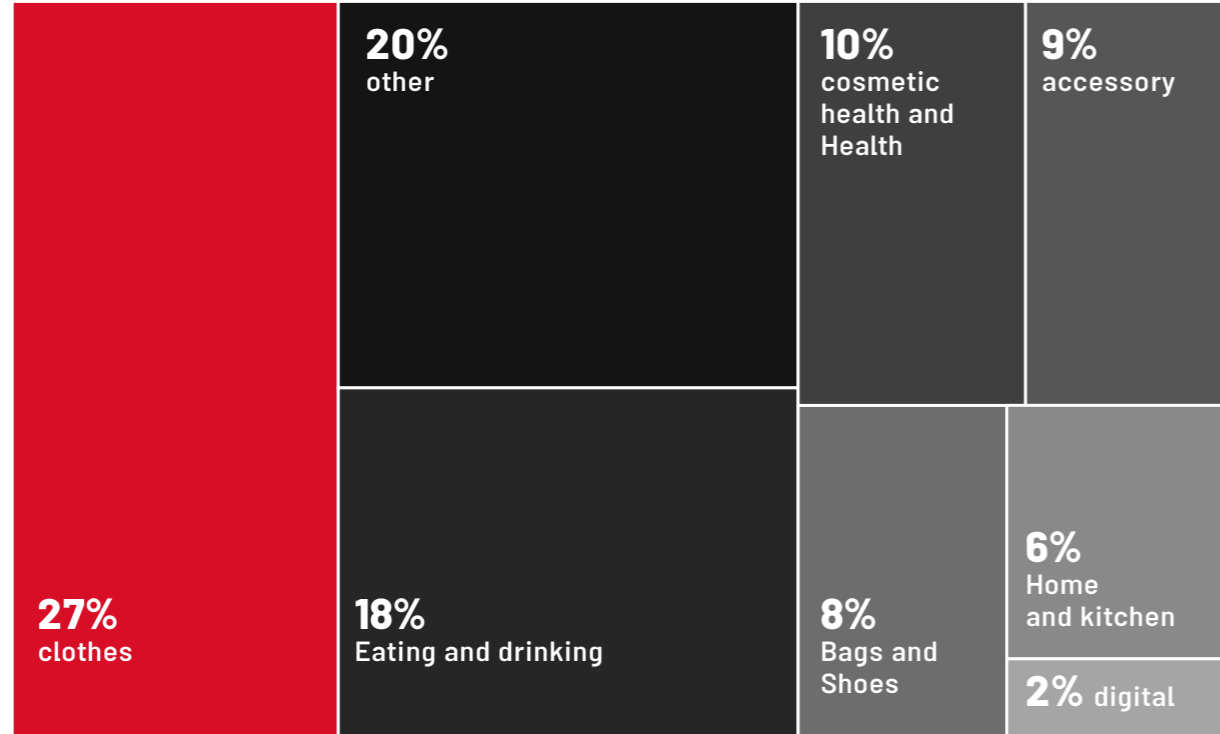
What are the real business **risks** and how are they **evaluated**?

How should I deal with **exit** and **end** of business scenarios?

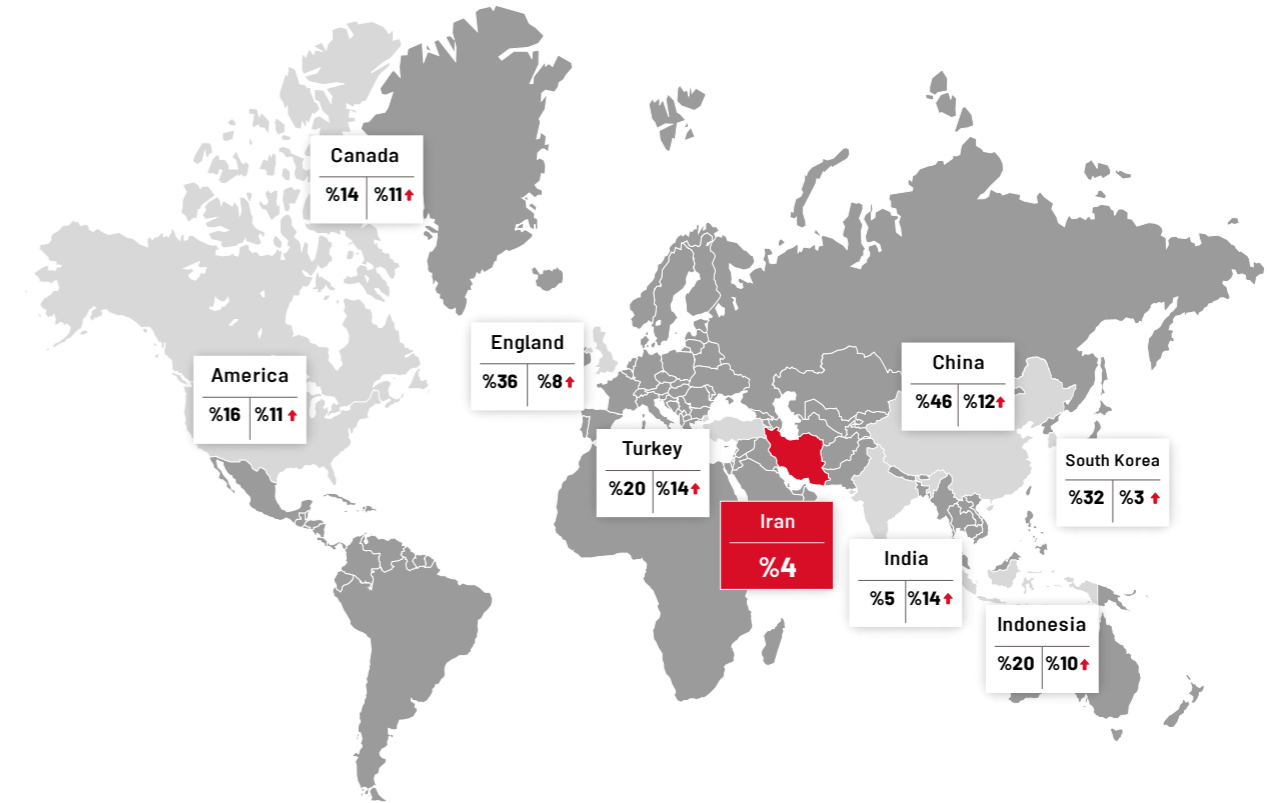


wiink

How business intelligence helps to achieve profitability and effectiveness?



The field of activity of Iran's Instagram stores in 2022



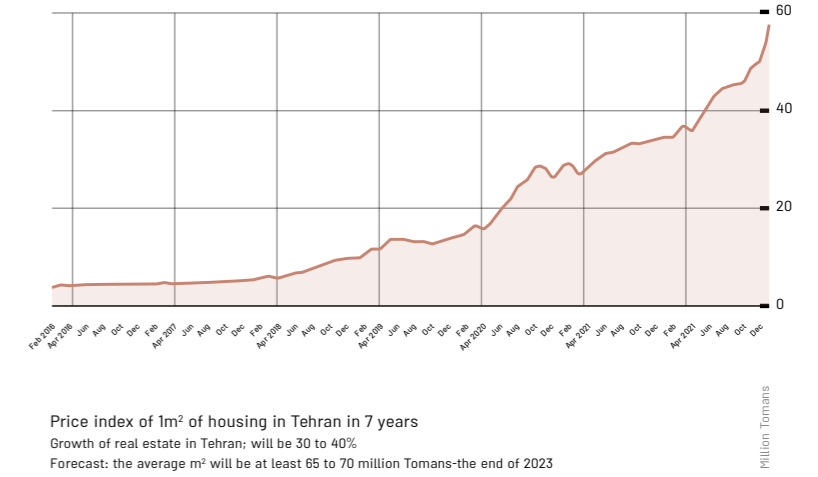
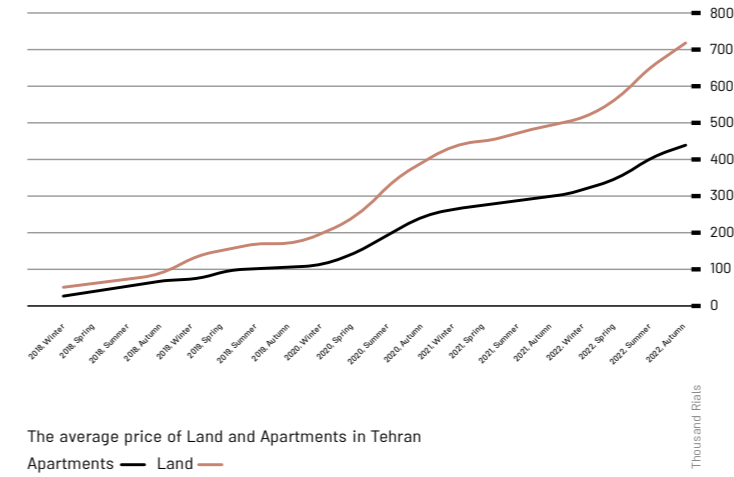
China	England	South Korea	Denmark	Turkey	Indonesia	America	Finland	Sweden	Canada	India	Iran
%46	%32	%36	%20	%20	%20	%16	%15	%14	%14	%5	%4

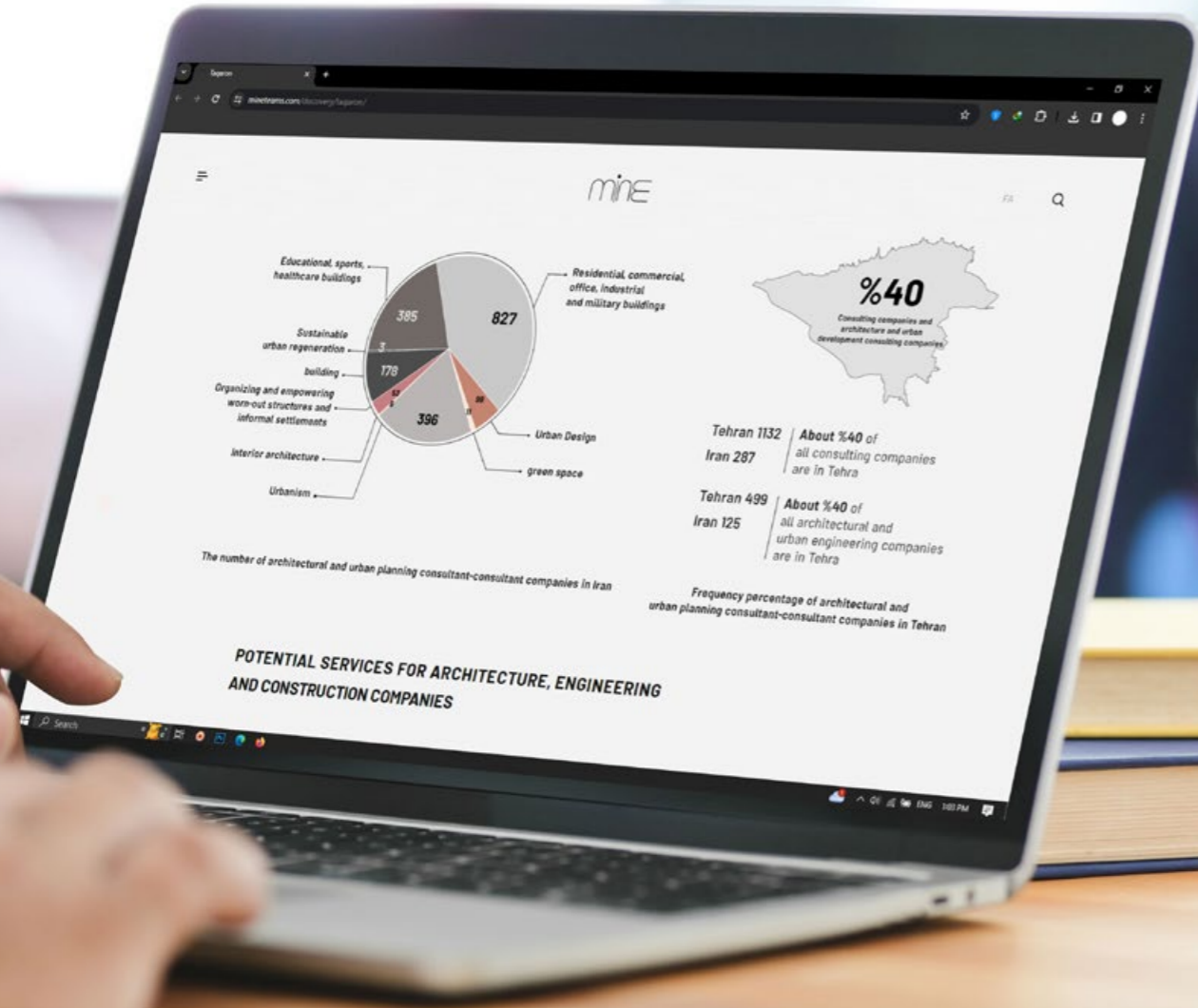
Expected annual growth rate in the next 5 years



How can I make **processes, tasks** and **relationships** within the business effective?

How is **innovative targeting** achieved at each stage of business?





### Specialized engineering solutions

Integrated project collaboration and delivery

### Data analysis and artificial intelligence

Integrated design and construction

### Workforce and skill development

### Prefab and modular construction

### Digital transformation

### Sustainable and green building design

### Construction technology and innovation

### Infrastructure development and management

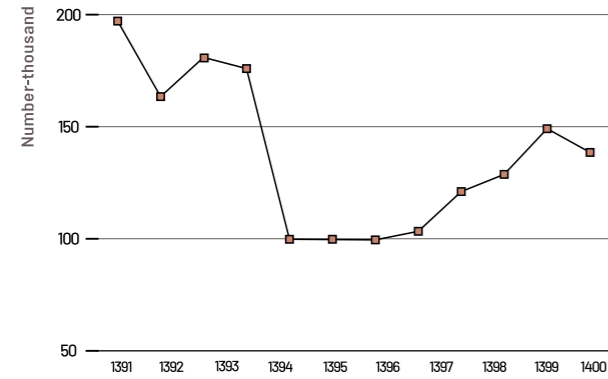
Smart cities and urban planning

### Facilities and asset management

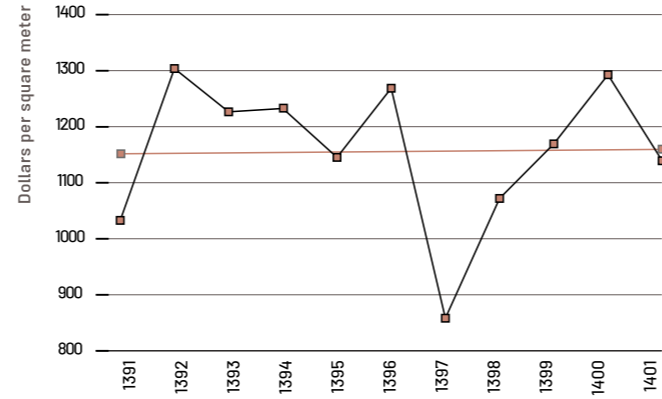
### Renovation and retrofitting

Advanced materials and techniques

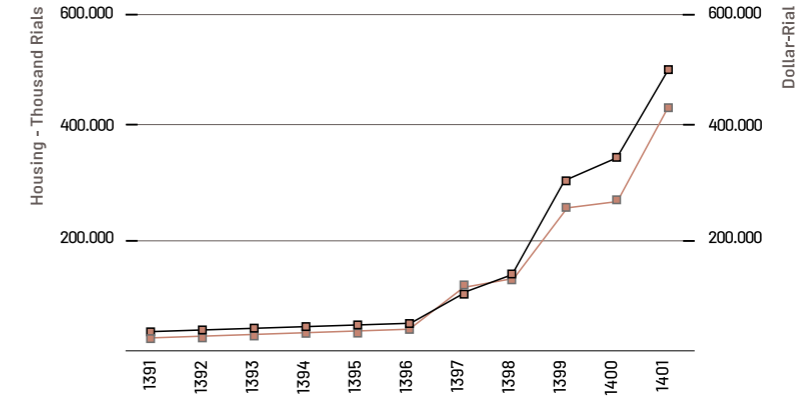
How can I verify and manage the organization's data and knowledge?



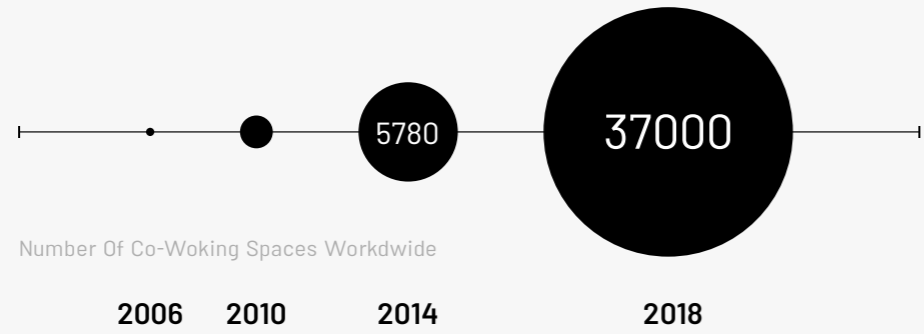
The frequency of residential building construction permits in urban areas of the country



The dollar price of housing in a 10-year period

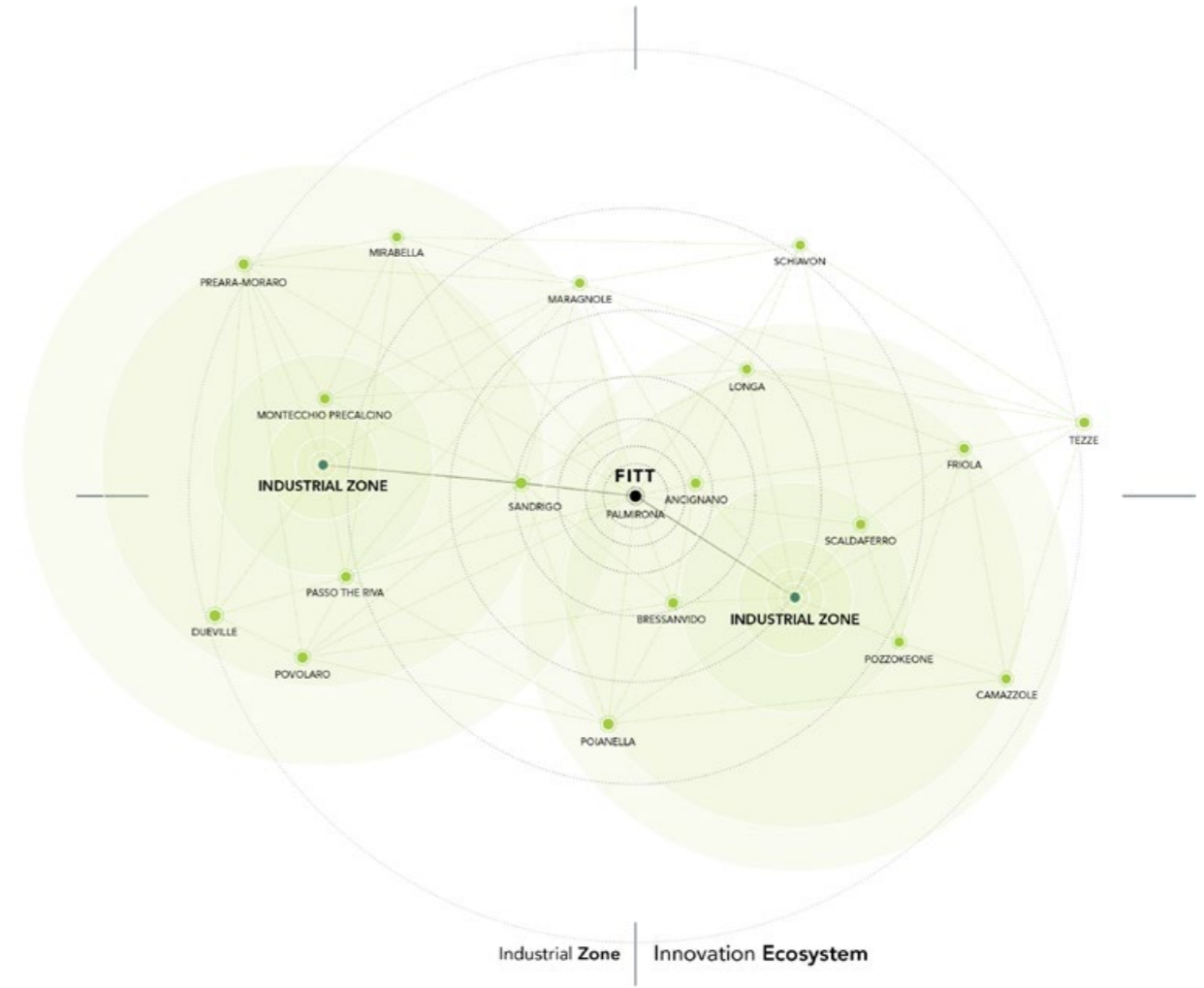


Comparison of housing and dollar price growth



Number Of Co-Working Spaces Worldwide

How can I align team and processes with **business goals**?



# DESIGN



## Experience

We create immersive digital and physical experiences from architecture and spatial design to online channels design and web development, that leave a lasting impression on your customers.

- Architecture Design
- Environmental Graphic
- Innovative Consultancy
- Website Design
- Graphic Design

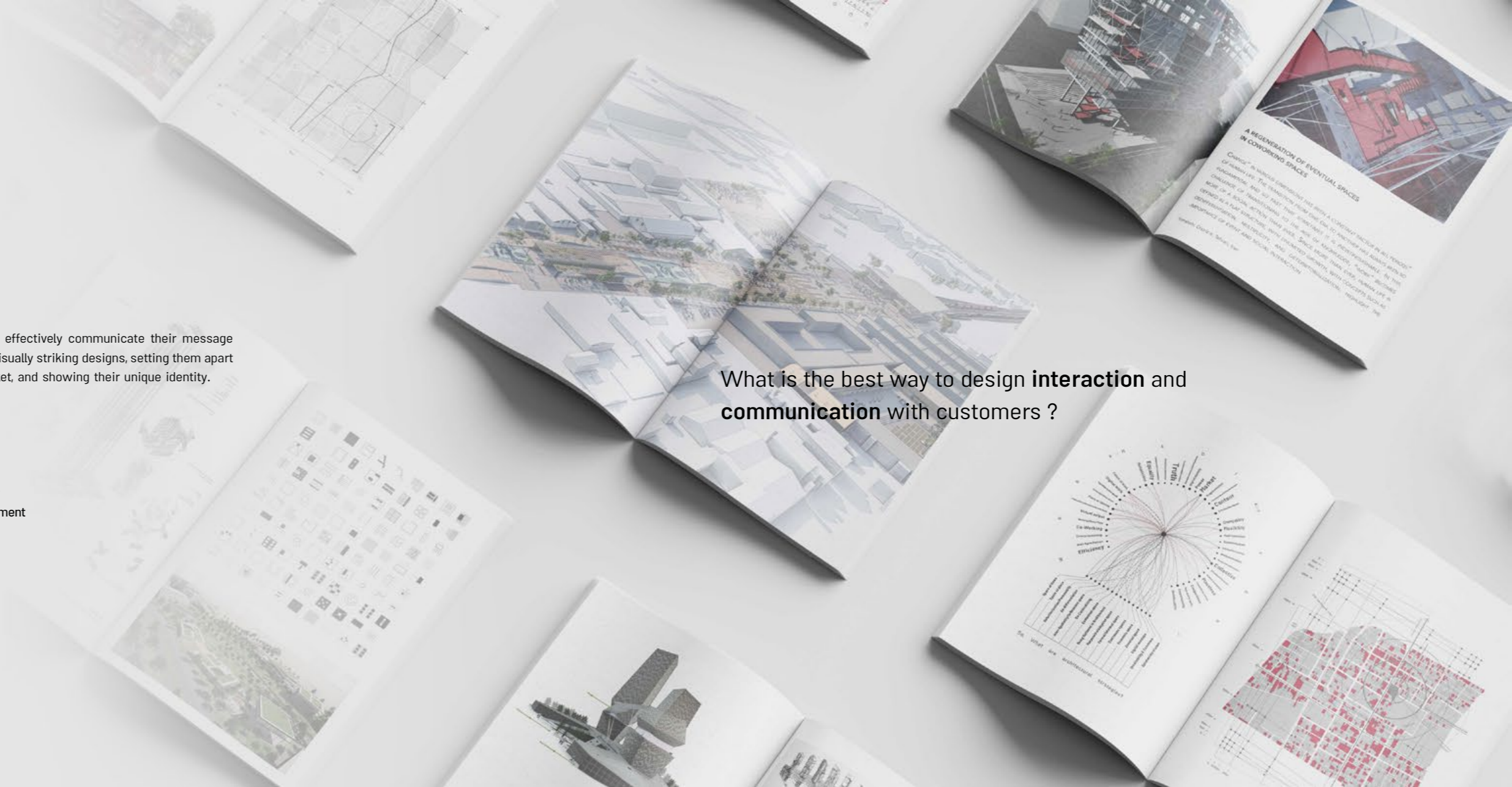
## Expression

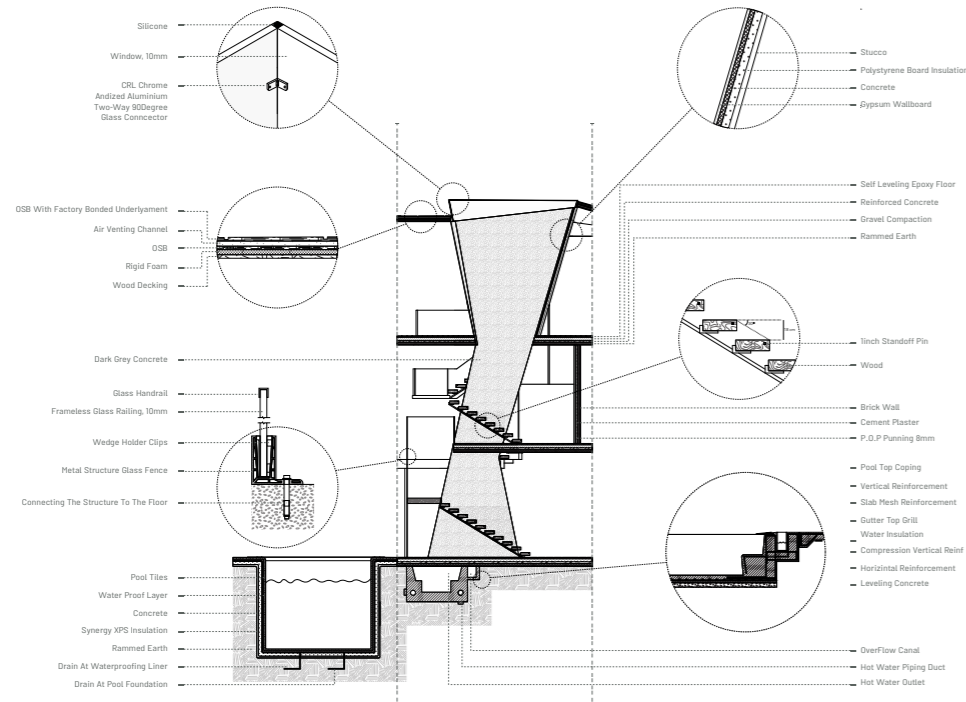
We enable brands to effectively communicate their message with captivating and visually striking designs, setting them apart in a competitive market, and showing their unique identity.

- Visual Identity
- Creative Strategy
- Verbal Identity
- Conceptual Strategy
- Experience Improvement

# DESIGN

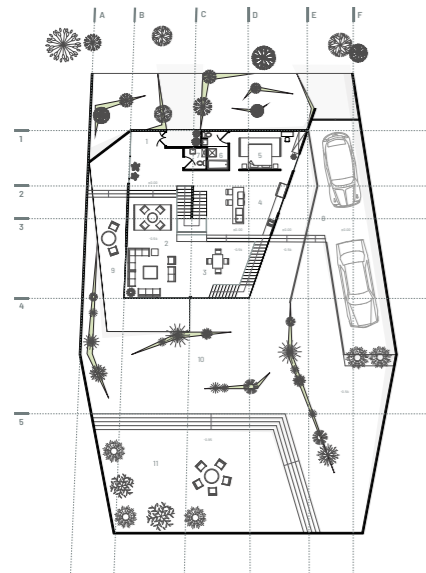
What is the best way to design **interaction** and **communication** with customers ?



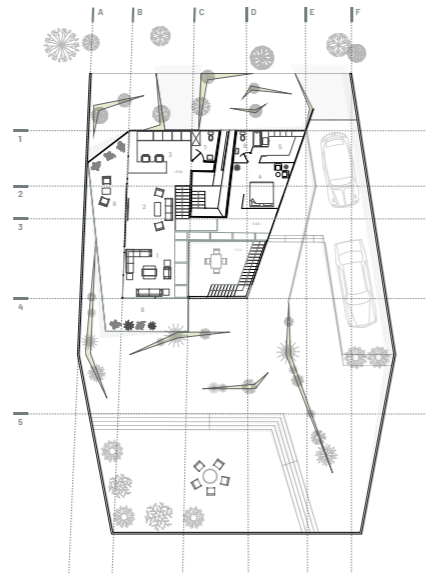


How can I use the updated **spatial program** and **innovative ideas** in building design?





- Ground Floor
- |               |                  |                |                    |
|---------------|------------------|----------------|--------------------|
| 1 Entrance    | 4 Kitchen        | 7 Toilet       | 10 Yard            |
| 2 Living Room | 5 Master Bedroom | 8 Parking      | 11 Gathering Space |
| 3 Dining Room | 6 Master Bath    | 9 Private Yard |                    |



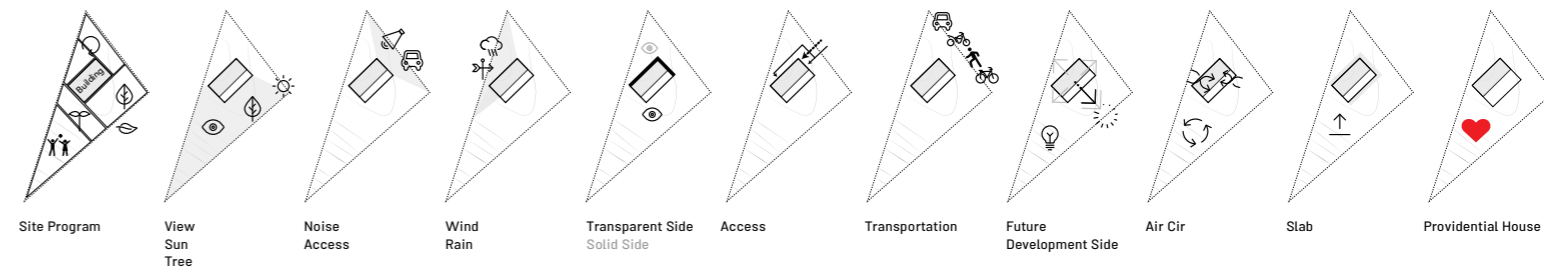
- 1st Floor
- |               |                  |                  |           |
|---------------|------------------|------------------|-----------|
| 1 Living Room | 3 Working Space  | 5 Walk-in Closet | 7 Toilet  |
| 2 TV Room     | 4 Master Bedroom | 6 Master Bath    | 8 Balcony |



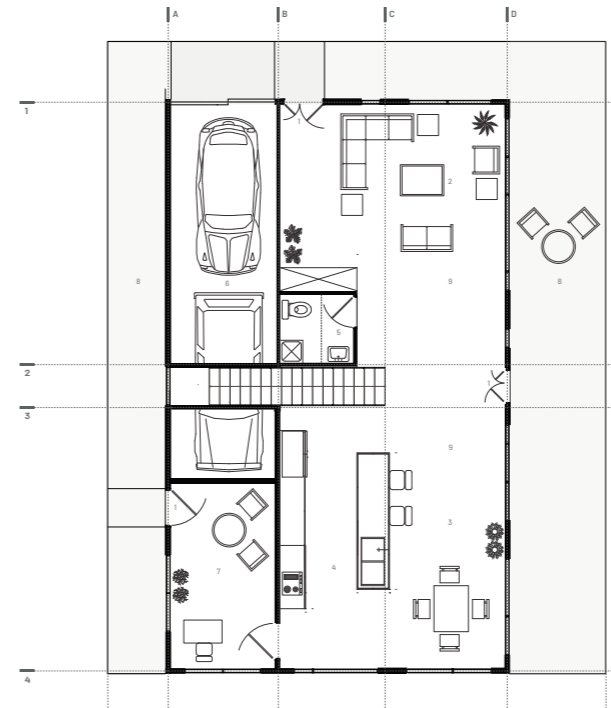




Site Design Process



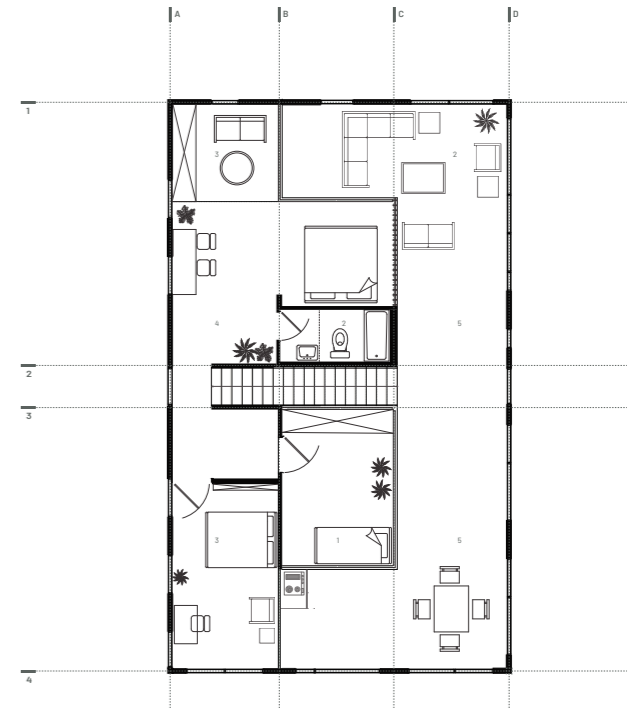
What factors in architectural design increase the **value** of the building?



0 | 1 | 5 | 10 |

Ground Floor

- 1 Entrance
- 2 Living Room
- 3 Dining Room
- 4 Kitchen
- 5 Bathroom
- 6 Parking
- 7 Office
- 8 Yard
- 9 Inbetween Space



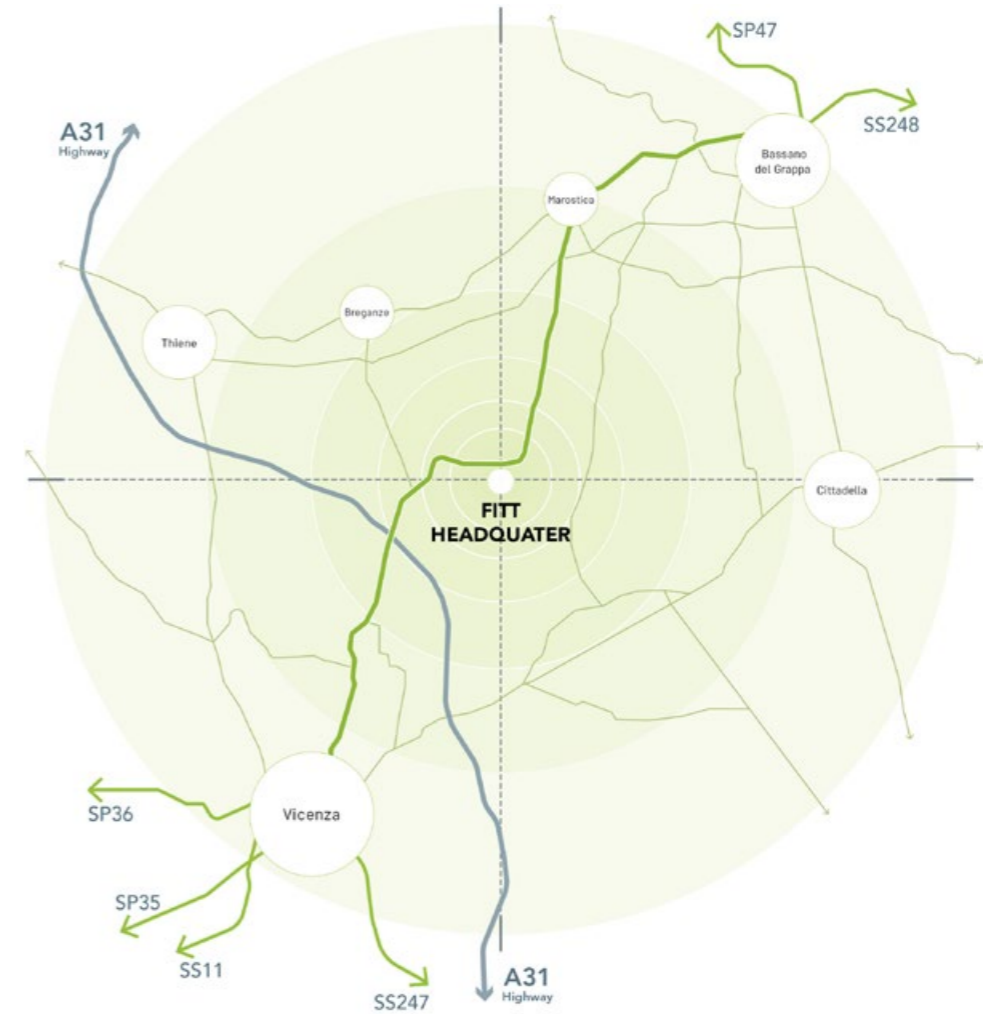
0 | 1 | 5 | 10 |

1st Floor

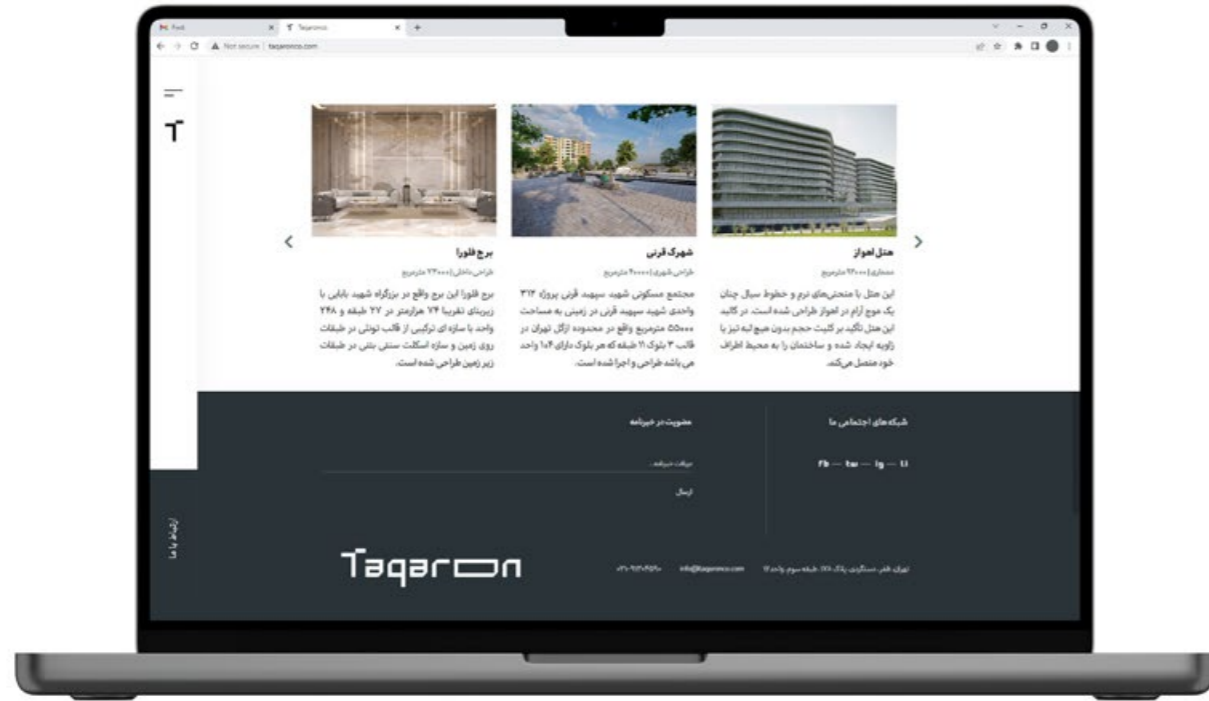
- 1 Bedroom
- 2 Master Bath
- 3 Conditional Space
- 4 Master Bedroom
- 5 Inbetween Space



What is the best **scenario** for building | space development?



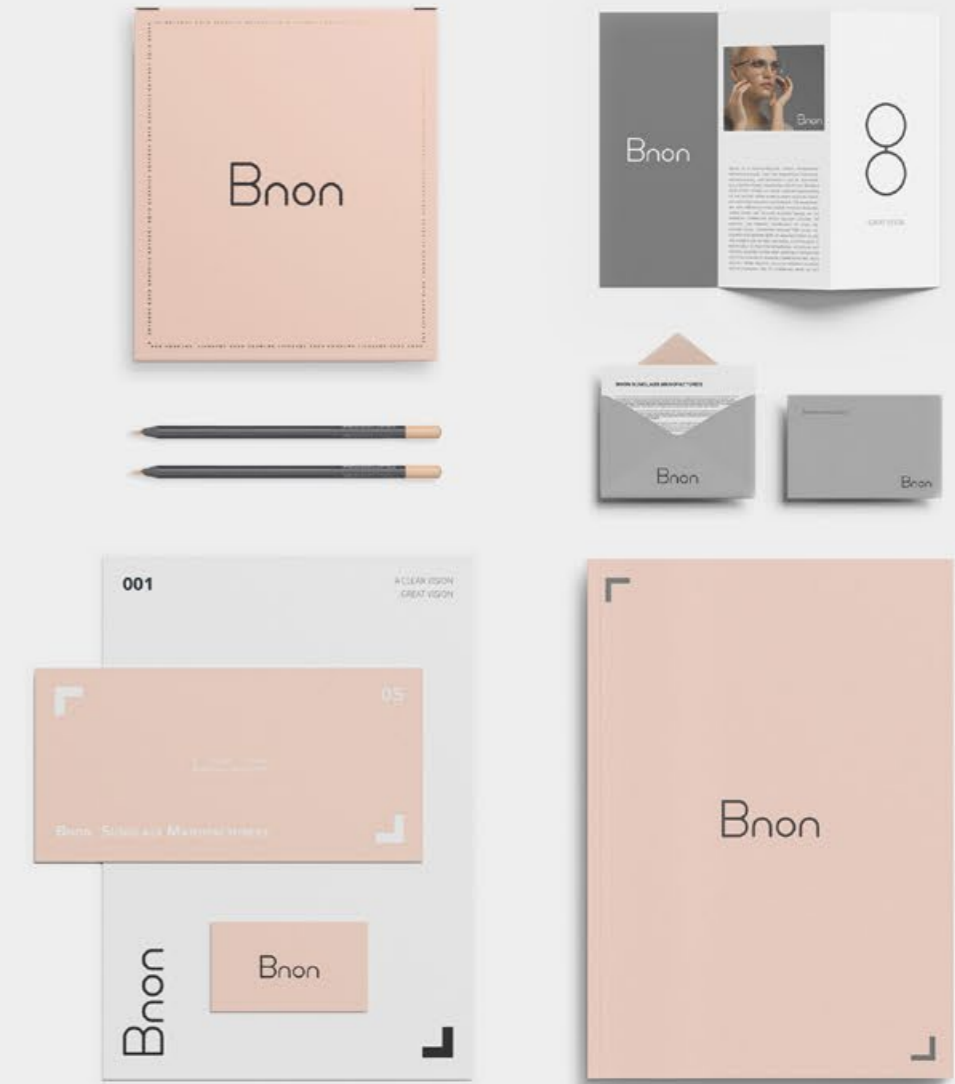
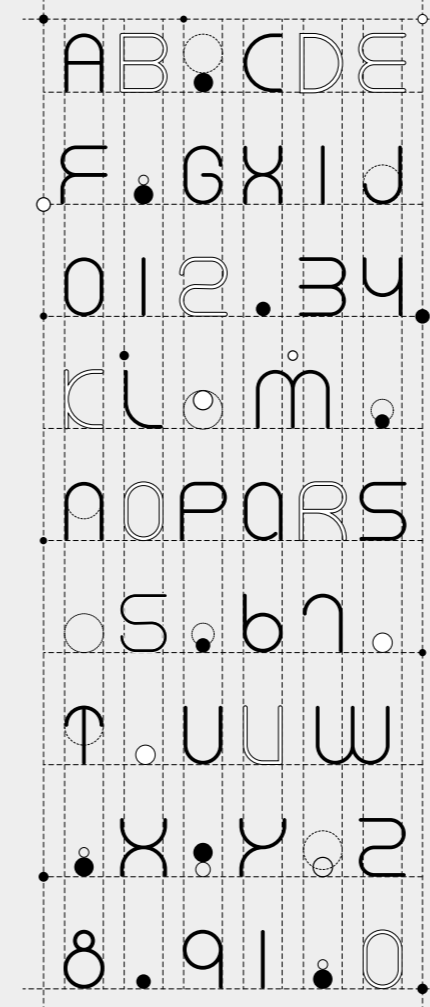
How does digital customer experience help the business | brand **value** grow?





What is the perfect **name** for a company | brand | building | product?

How are business and product accurately reflected by **visual identity design**?









شماره تلفن: ۰۲۱-۸۸۸۸۸۸۸۸  
 آدرس: تهران، خیابان ولیعصر  
 پست‌کد: ۱۹۸۸۸۸

### کارخانه سنگ خوزستان

#### مدیریت محترم شرکت عمران گستر ایادانه

با سلام و نهایت احترام:

به استحضار می‌رساند کارخانه سنگ خوزستان در سال ۱۳۹۴ تأسیس و شروع به کار نمود. در ابتدا این کارخانه به صورت سنتی اداره می‌شد و با حجم تولید کم و در عین حال تنوع سنگ زیاد (مانند سنگ سیاه نجف آباد، لائوس، آرنه، ایکومون، تیرسو، تراورتن و...) که عمدتاً با صورت درپوش تولید می‌شد.

در سال ۱۳۹۶ به سبب کثرت شرکا و اختلافات مابین آنها تصمیم گرفته شد سنگ جدیدی در کنار سنگ قرمز تأسیس و شرک به تعداد کثیری تقسیم شوند که به سنگری خوزستان ۱ و ۲ نام گذاری شد. رفته رفته با توجه به نیاز بازار کارخانه از کثرت و تنوع تولید گسست و به تولید یک نوع سنگ پرداخت در حال حاضر سنگری خوزستان ۱ و ۲ با مدیریت واحد اقدام به تولید سنگ گرانیت (پهلو) و روضن (بصورت تایل) و در توسعه تولیدی مساب، پوشه، چرمی، تیشه، اسکرچ و... می‌باشد.

امالین کارخانه در زمینه‌هایی که در بالا ذکر شد، آماده‌گی خود را جهت همکاری با آن شرکت محترم اعلام می‌دارد. امید است با همکاری همدیگر بتوانیم سهم به‌سزایی در نیل به اهداف باکثیری.

با کمال احترام و تقدیر از توجه شما

محسن نوری  
 مدیرعامل کارخانه سنگ خوزستان

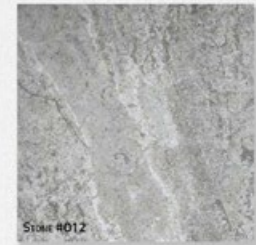
تلفن: ۰۲۱-۸۸۸۸۸۸۸۸  
 آدرس: تهران، خیابان ولیعصر  
 پست‌کد: ۱۹۸۸۸۸



Stone #10



Stone #11



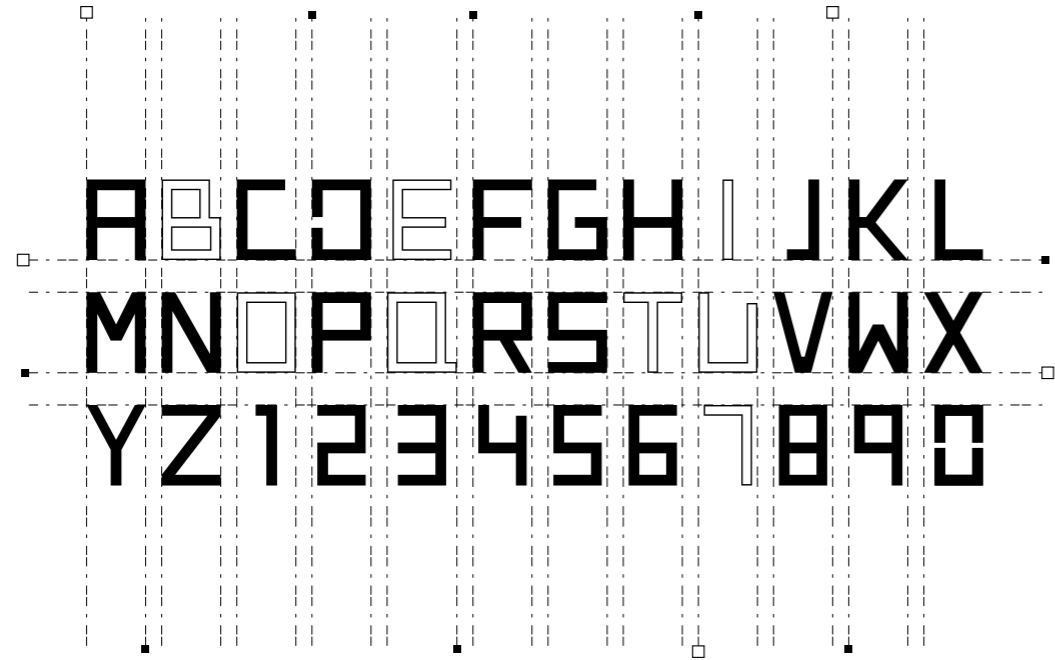
Stone #12



Stone #13



Stone #14



How can I create a **memorable** customer experience?

BOUTIQUE  
APARTMENT





How to help the **growth** of business | product value by **visual identity design**?



MARYZ  
J E W E L R Y

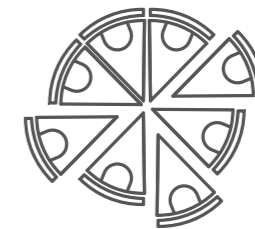
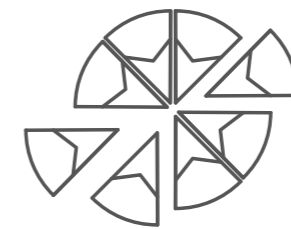
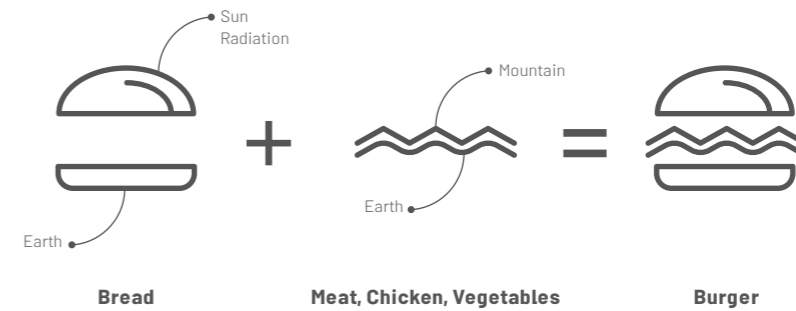




When is the real need for branding **formed** and **evaluated**?

How is the best expression of **brand architecture** obtained?







[mineteams.com](http://mineteams.com) | [Info@mineteams.com](mailto:Info@mineteams.com) | +98 990 22 11 412

Tehran. Iran | [@Mineteams](#) | [Linkedin.com/mineteams](https://www.linkedin.com/company/mineteams) | [Instagram.com/mineteams](https://www.instagram.com/mineteams)

CONTACTS



گروه رشد، توسعه کسب و کار  
Growth Group, Business Development

March 2024

فروردین ۱۴۰۳

